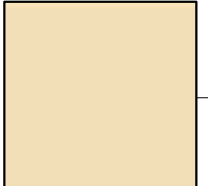
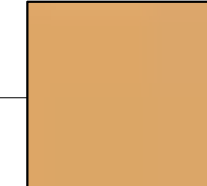


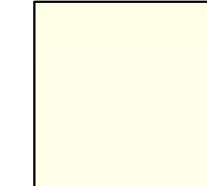




STREET VIEW IMAGE FROM NORTH 24TH AVENUE

- 
 BODY COLOR #1
 SW 6113
 INTERACTIVE CREAM
- 
 BODY COLOR #2
 SW 6115
 TOTALLY TAN
- 
 BODY COLOR #3
 SW 6117
 SMOKEY TOPAZ
- 
 ACCENT COLOR
 SW 6194
 BASIL
- 
 TRIM COLOR
 SW 7001
 MARSHMALLOW



FRONT ELEVATION



VIEW FROM STREET CORNER



VIEW LOOKING SOUTH

DESIGNED PKA
 DRAWN PKA
 CHECKED PKA



CRYSTAL LAKE
TOWNHOMES
 BROWARD COUNTY HOUSING AUTHORITY

3100 NORTH 24TH AVENUE
 HOLLYWOOD, FLORIDA

PROJECT NO. 0874
 DATE: JUNE 15, 2009

REVISIONS

SCHEMATIC IMAGES

FINAL TAC SUBMITTAL



VIEW OF RECREATION AREA



AERIAL VIEW

DESIGNED PKA

DRAWN PKA

CHECKED PKA



CRYSTAL LAKE
TOWNHOMES
BROWARD COUNTY HOUSING AUTHORITY

3100 NORTH 24TH AVENUE
HOLLYWOOD, FLORIDA

PROJECT NO. 0874

DATE: JUNE 15, 2009

REVISIONS

SCHEMATIC IMAGES

FINAL TAC SUBMITTAL



VIEW FROM LAKE

DESIGNED PKA

DRAWN PKA

CHECKED PKA



CRYSTAL LAKE
TOWNHOMES
 BROWARD COUNTY HOUSING AUTHORITY

3100 NORTH 24TH AVENUE
 HOLLYWOOD, FLORIDA

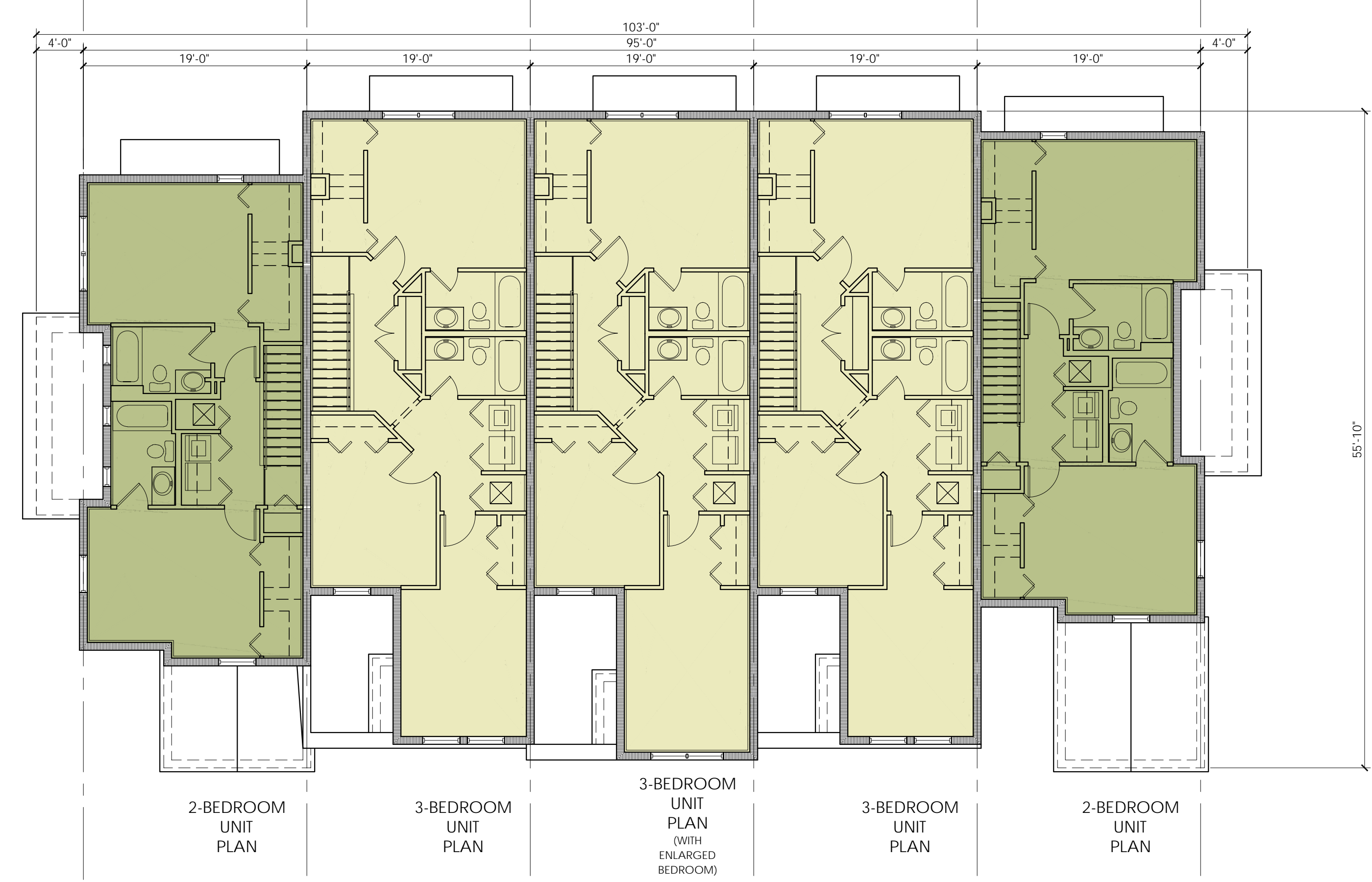
PROJECT NO. 0874

DATE: JUNE 15, 2009

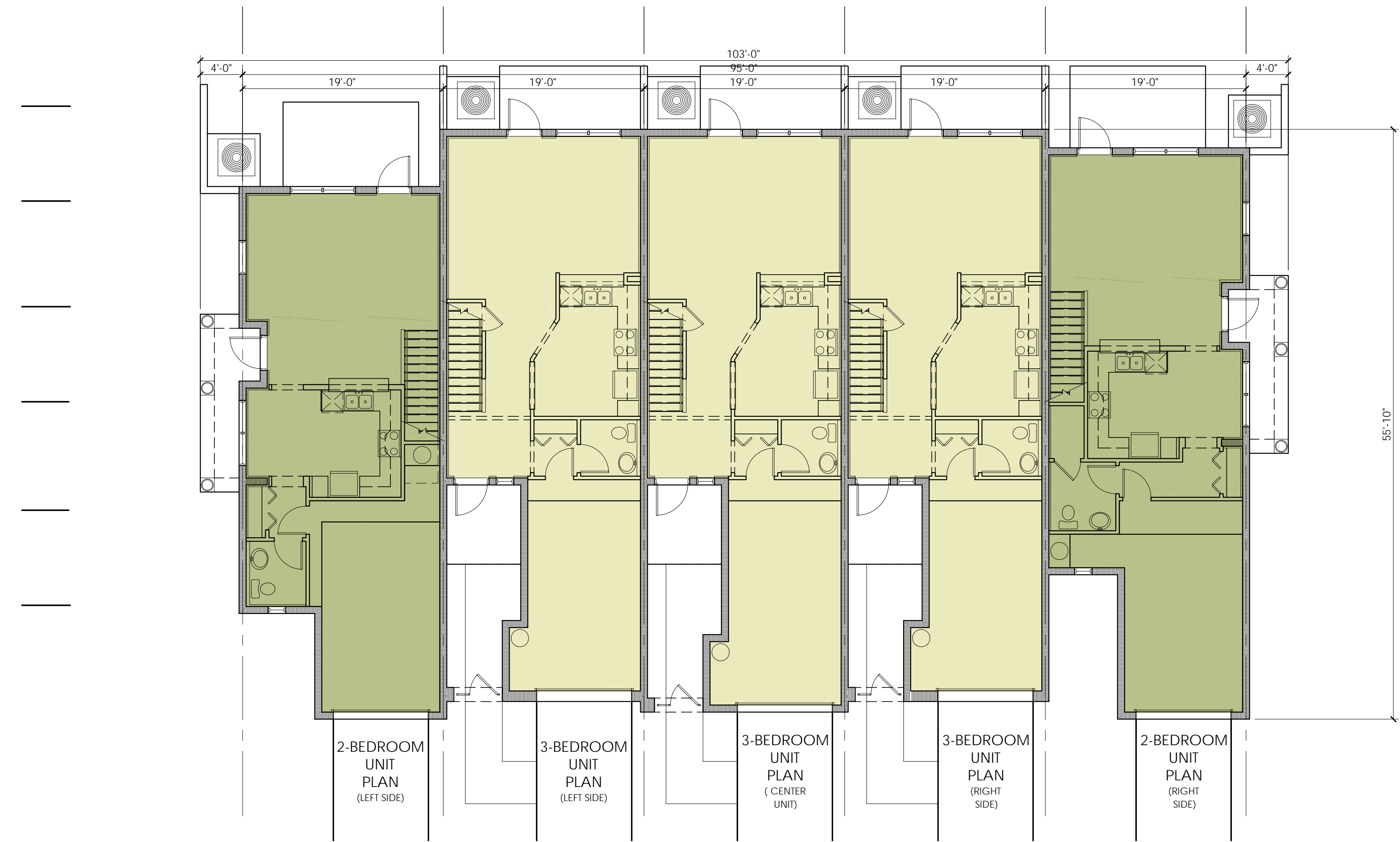
REVISIONS

SCHEMATIC IMAGES

FINAL TAC SUBMITTAL



SECOND FLOOR BUILDING PLAN
 SCALE: 1/8" = 1'-0"



FIRST FLOOR BUILDING PLAN
 SCALE: 1/8" = 1'-0"

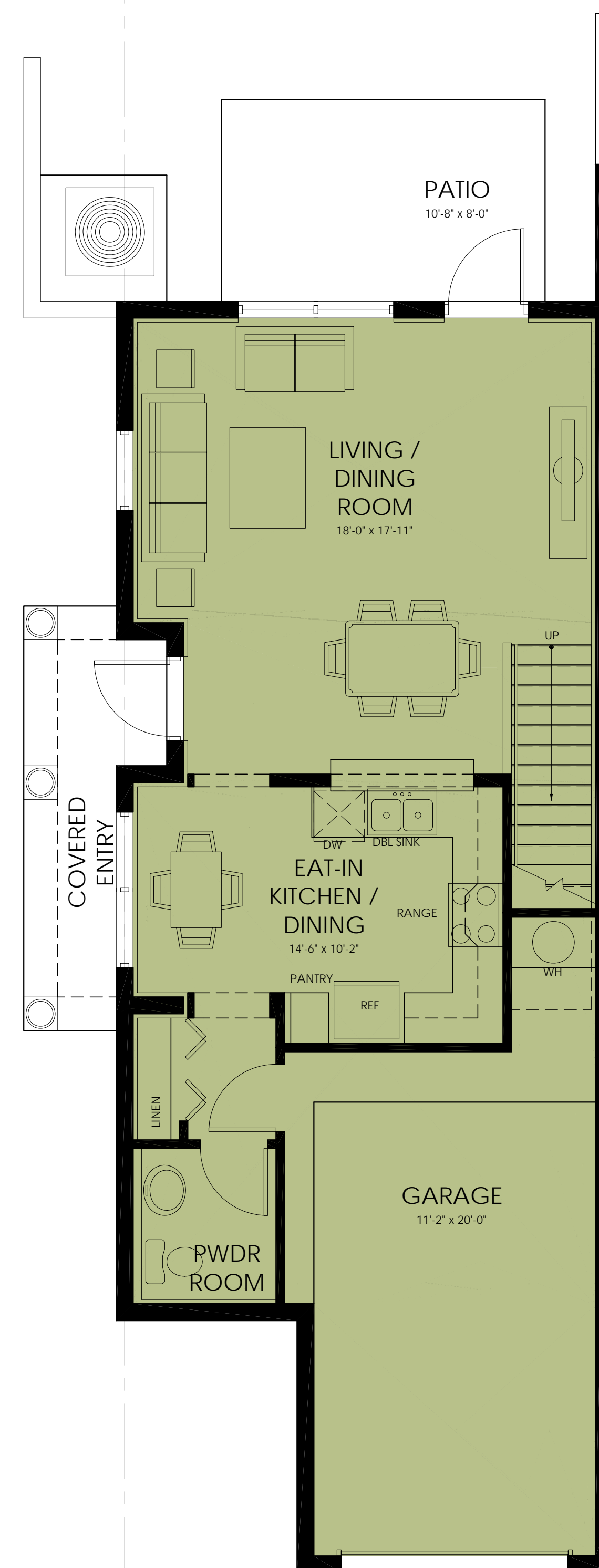


CRYSTAL LAKE
TOWNHOMES
BROWARD COUNTY HOUSING AUTHORITY

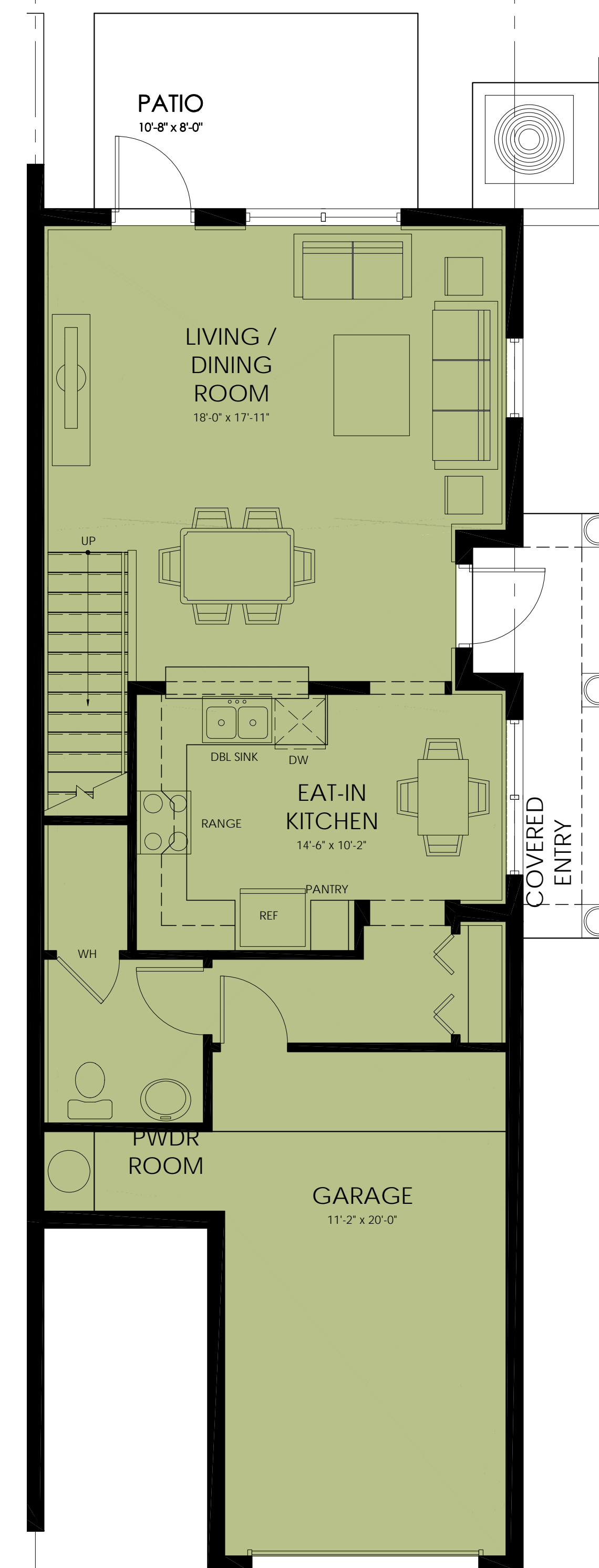
3100 NORTH 24TH AVENUE
HOLLYWOOD, FLORIDA

PROJECT NO. 0874
DATE: JUNE 15, 2009

REVISIONS



FIRST FLOOR UNIT PLAN
SCALE: 1/4" = 1'-0" (2-BEDROOM AT LEFT SIDE OF BLDG)



FIRST FLOOR UNIT PLAN
SCALE: 1/4" = 1'-0" (2-BEDROOM AT RIGHT SIDE OF BLDG)

2-BEDROOM UNIT
AREA CALCULATIONS

1ST FLOOR U/A	658 S.F.
2ND FLOOR U/A	720 S.F.
TOTAL U/A	1,378 S.F.
GARAGE	284 S.F.
COVERED ENTRY	72 S.F.
COVERED PATIO	41 S.F.
TOTAL	1,775 S.F.

2-BEDROOM UNIT
PLANS

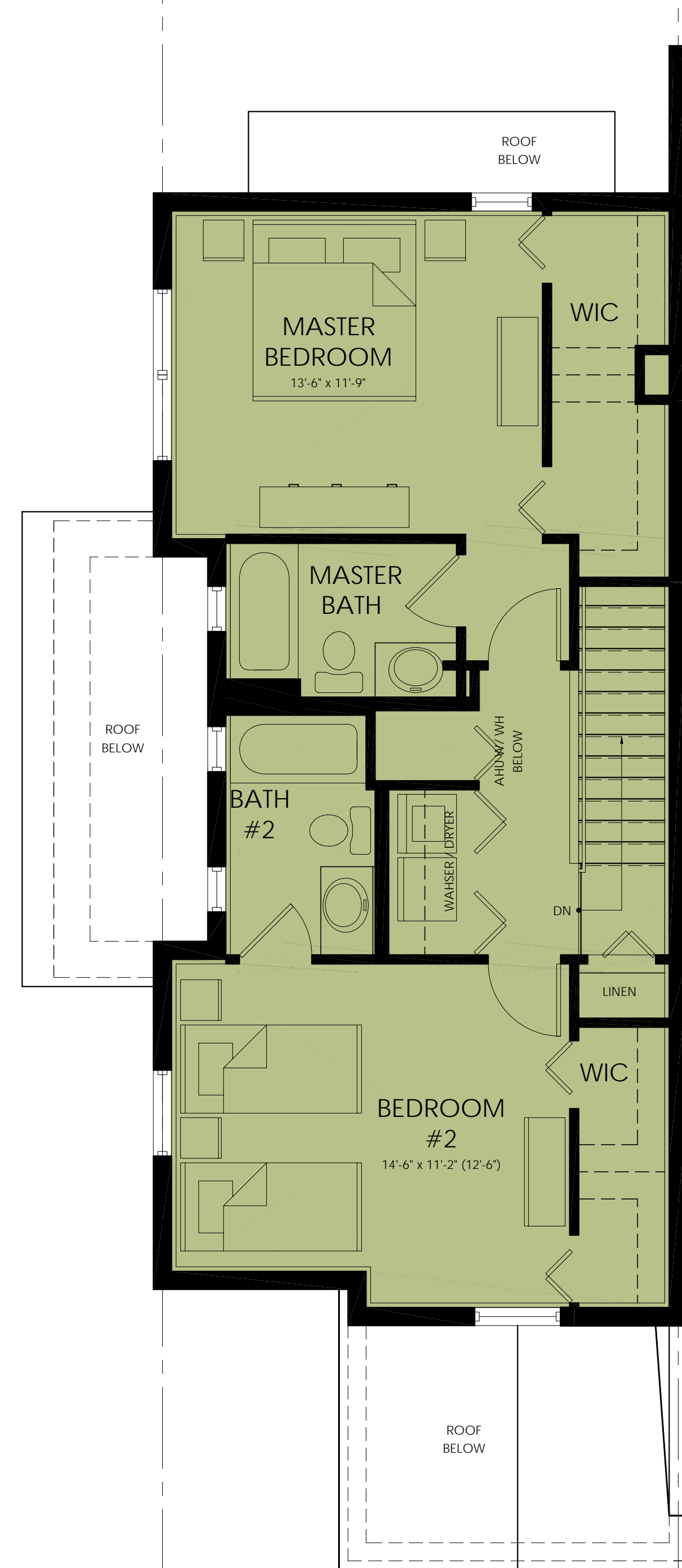
FINAL TAC SUBMITTAL



**CRYSTAL LAKE
TOWNHOMES**
BROWARD COUNTY HOUSING AUTHORITY

3100 NORTH 24TH AVENUE
HOLLYWOOD, FLORIDA
PROJECT NO. 0874
DATE: JUNE 15, 2009

REVISIONS



SECOND FLOOR UNIT PLAN
SCALE: 1/4" = 1'-0" (2-BEDROOM AT LEFT SIDE OF BLDG)



SECOND FLOOR UNIT PLAN
SCALE: 1/4" = 1'-0" (2-BEDROOM AT RIGHT SIDE OF BLDG)

**2-BEDROOM UNIT
AREA CALCULATIONS**

1ST FLOOR U/A	658 S.F.
2ND FLOOR U/A	720 S.F.
TOTAL U/A	1,378 S.F.
GARAGE	284 S.F.
COVERED ENTRY	72 S.F.
COVERED PATIO	41 S.F.
TOTAL	1,775 S.F.

**2-BEDROOM UNIT
PLANS**

FINAL TAC SUBMITTAL

DESIGNED PKA
DRAWN PKA
CHECKED PKA

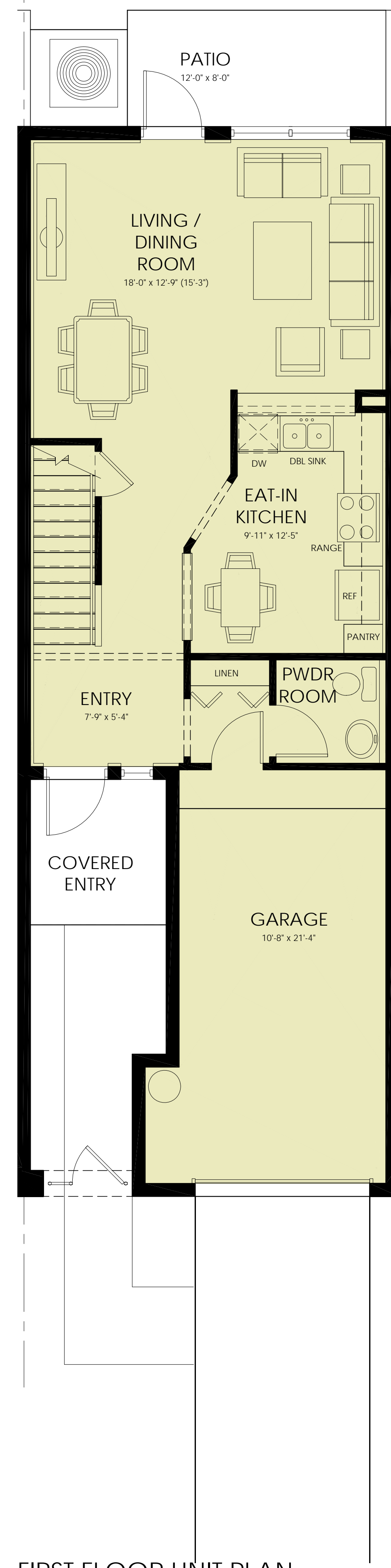


**CRYSTAL LAKE
TOWNHOMES**
BROWARD COUNTY HOUSING AUTHORITY

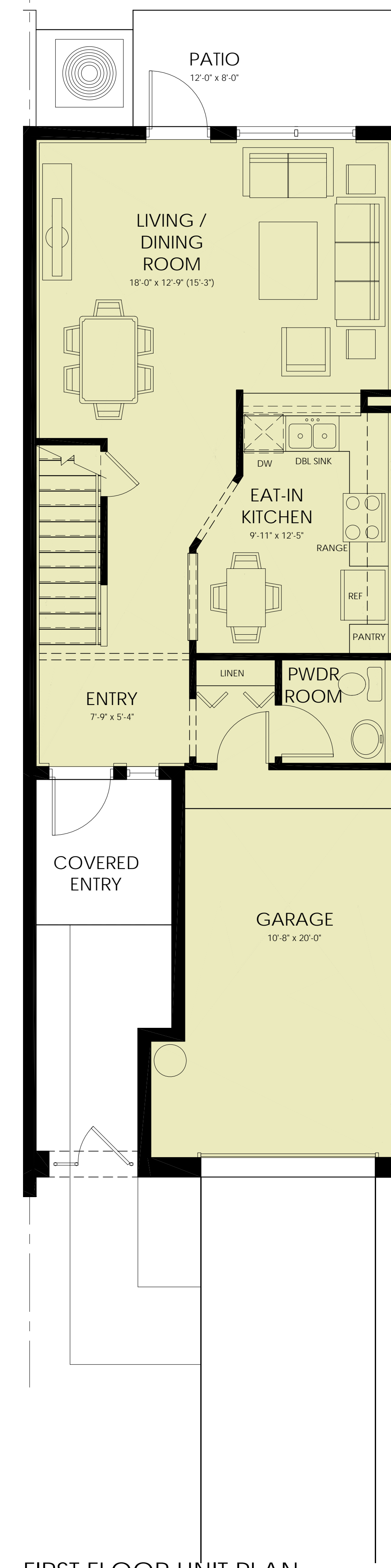
3100 NORTH 24TH AVENUE
HOLLYWOOD, FLORIDA

PROJECT NO. 0874
DATE: JUNE 15, 2009

REVISIONS



FIRST FLOOR UNIT PLAN
SCALE: 1/4" = 1'-0" (CENTER UNIT)



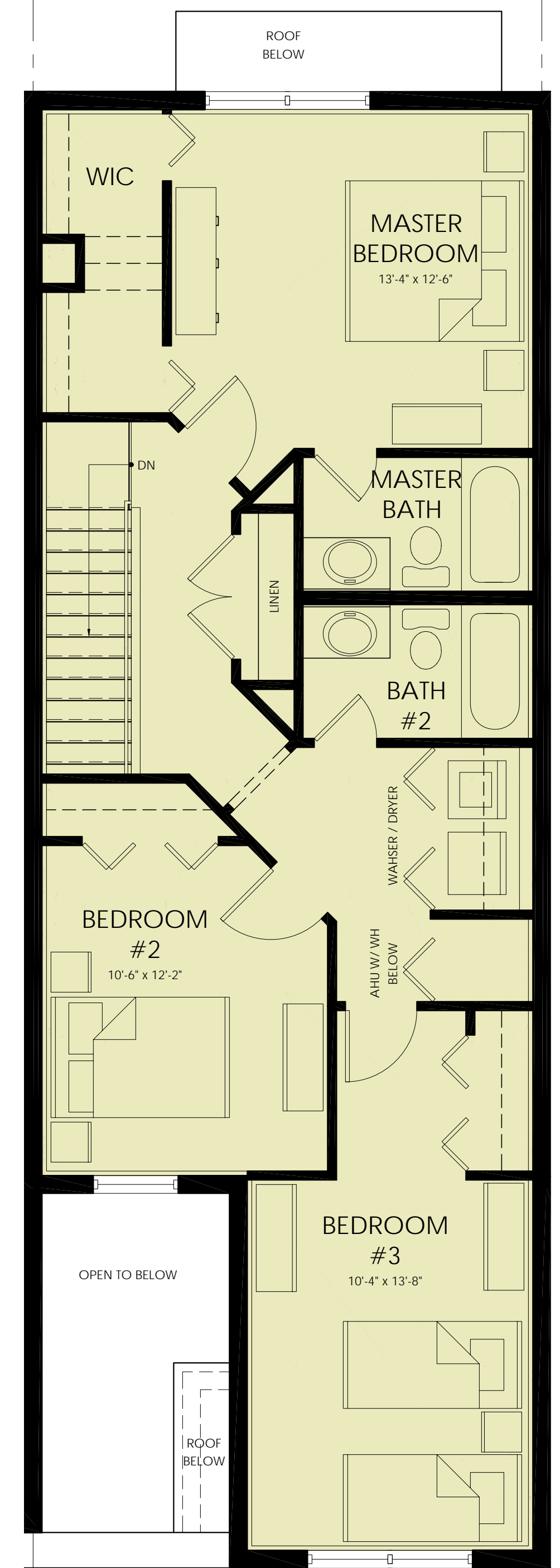
FIRST FLOOR UNIT PLAN
SCALE: 1/4" = 1'-0" (LEFT AND RIGHT SIDE)

3-BEDROOM UNIT
AREA CALCULATIONS

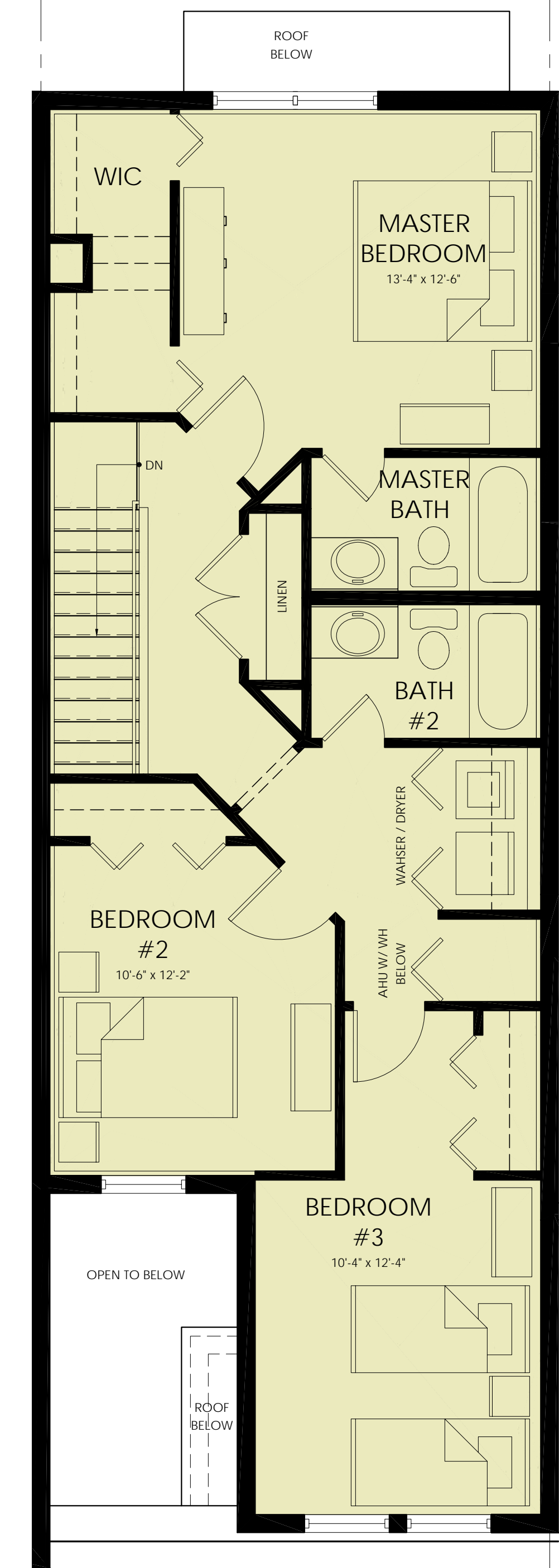
1ST FLOOR U/A	634 S.F.
2ND FLOOR U/A	902 S.F.
TOTAL U/A	1,536 S.F.
GARAGE	277 S.F.
COVERED ENTRY	53 S.F.
COVERED PATIO	37 S.F.
TOTAL	1,903 S.F.

3-BEDROOM UNIT
PLANS

FINAL TAC SUBMITTAL



SECOND FLOOR UNIT PLAN
SCALE: 1/4" = 1'-0" (CENTER UNIT)



SECOND FLOOR UNIT PLAN
SCALE: 1/4" = 1'-0" (LEFT AND RIGHT SIDE)

**3-BEDROOM UNIT
AREA CALCULATIONS**

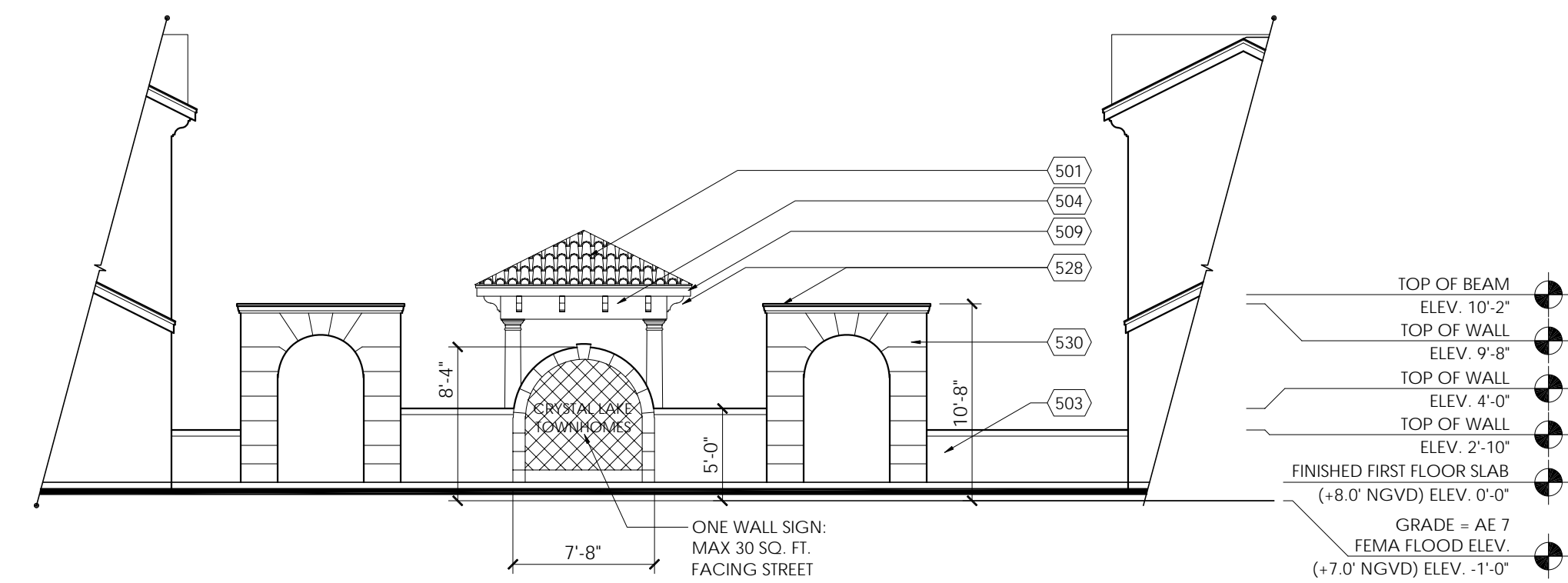
1ST FLOOR U/A	634 S.F.
2ND FLOOR U/A	902 S.F.
TOTAL U/A	1,536 S.F.
GARAGE	277 S.F.
COVERED ENTRY	53 S.F.
COVERED PATIO	37 S.F.
TOTAL	1,903 S.F.

**3-BEDROOM UNIT
PLANS**

FINAL TAC SUBMITTAL



FRONT ELEVATION
SCALE: 1/8" = 1'-0"



ENTRY WALL FRONT ELEVATION
SCALE: 1/8" = 1'-0"



REAR ELEVATION
SCALE: 1/8" = 1'-0"



LEFT ELEVATION
SCALE: 1/8" = 1'-0"



RIGHT ELEVATION
SCALE: 1/8" = 1'-0"

EXTERIOR ELEVATION KEYNOTES

- 501 - CEMENT TILE ROOFING
- 503 - LIGHTLY TEXTURED STUCCO
- 504 - SMOOTH STUCCO
- 505 - TOOLED STUCCO SCORE LINE: 1/2" WIDTH
- 509 - WOOD FASCIA
- 522 - IMPACT RESISTANT WINDOW
- 528 - DECORATIVE TRIM BY BUILDER
- 530 - FAUX STONE ACCENT
- 531 - DECORATIVE SHUTTER, HEIGHT TO MATCH WINDOW/ DOOR